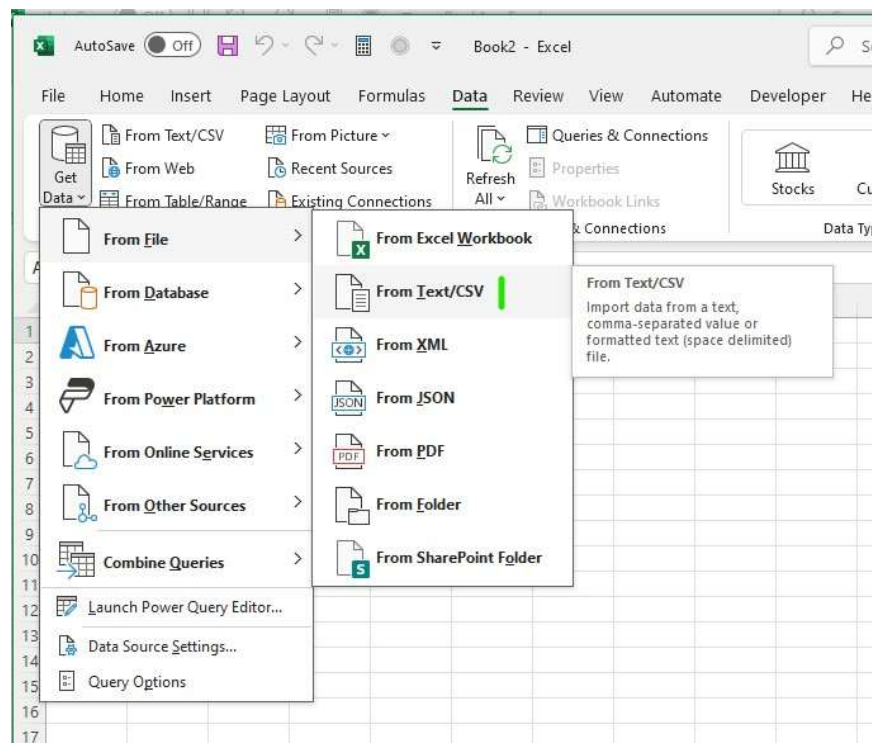
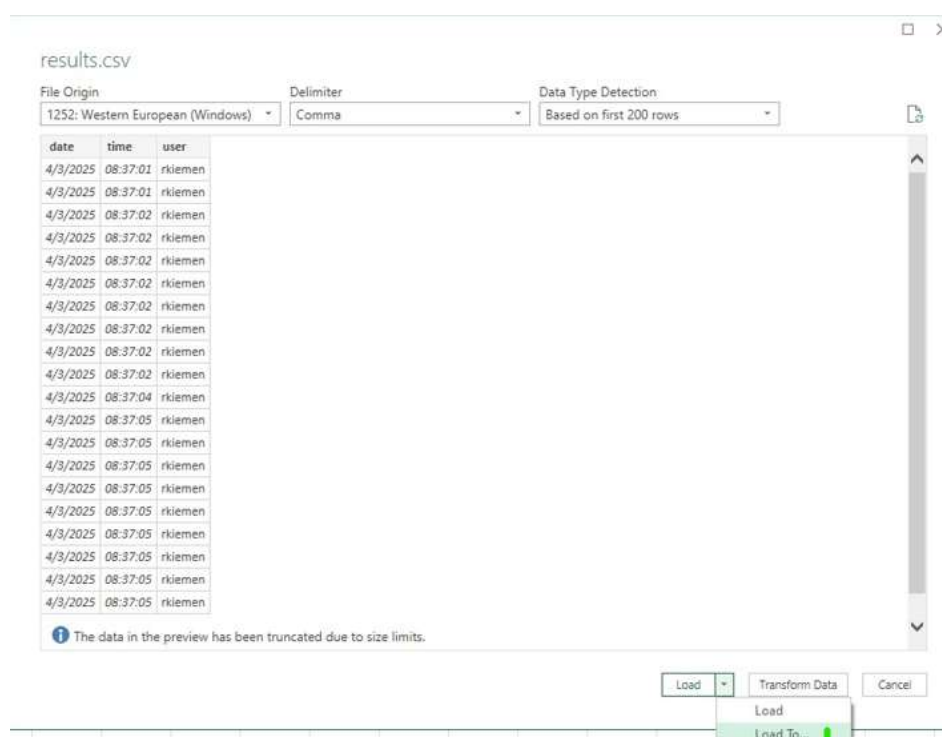


(only works with Microsoft Office for Windows, not with Microsoft Office for Mac)

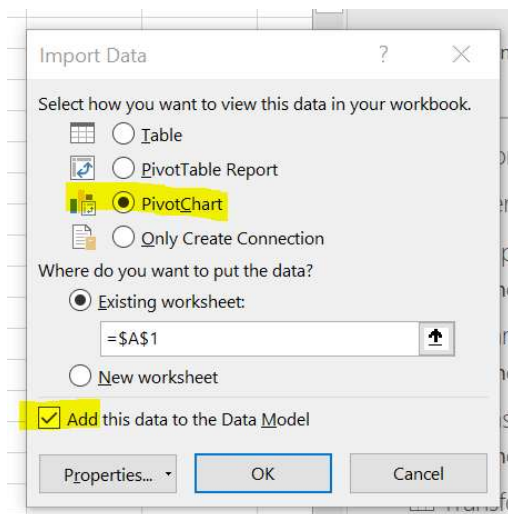
1. Create and download the corresponding results.csv with Logviewer.
2. Open a new Excel file, get Data > from file > text csv



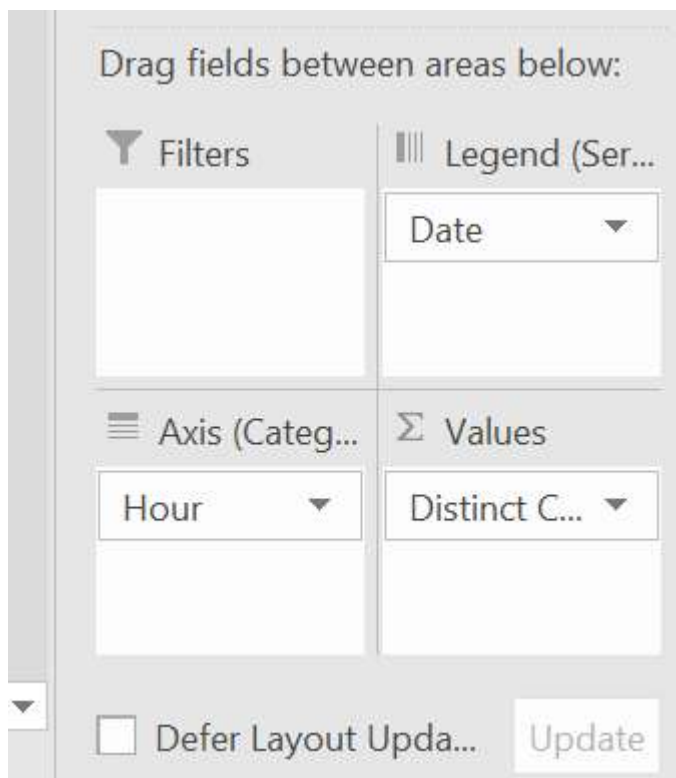
3. After selecting the results.csv file, select "Load to" under "Load" in the following window (the previously selected results.csv file should be displayed).



4. Now select "PivotChart" and "Add this data to the data model"



5. Designing the pivot table by arranging it as per the below



6. The final step is to set the value field for "Number of users" > "Discrete number"